

MONTHLY MEMBERSHIP PROGRESS REPORT

District N 1

Results as of: 12/31/2023

GMT:

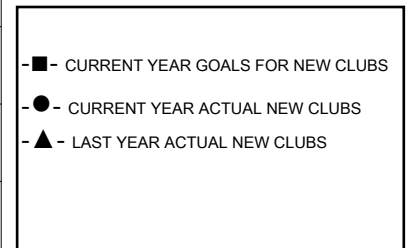
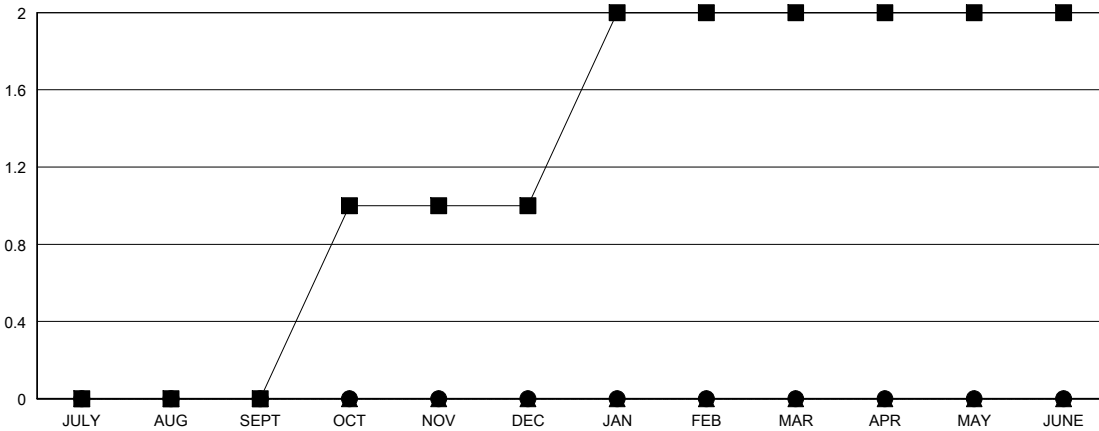
LOCATION PRINCE EDWARD ISLAND

GMT CA

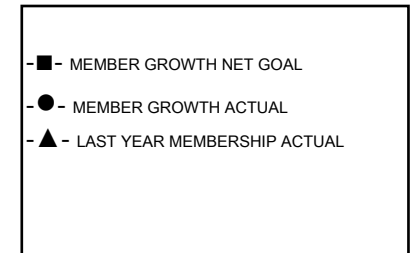
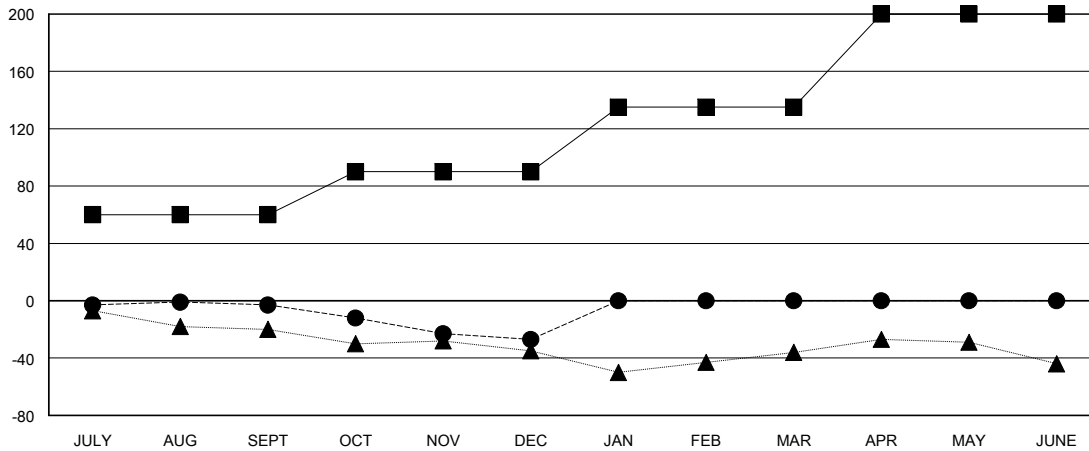
Clubs			
RESULTS FOR 2023-2024			
QUARTER	NEW CLUB GOAL	NEW CLUBS	DROPPED CLUBS
JULY/AUG/SEPT	0	0	1
OCT/NOV/DEC	1	0	0
JAN/FEB/MAR	1	0	0
APR/MAY/JUNE	0	0	0

Members			
RESULTS FOR 2023-2024			
QUARTER	MEMBER GROWTH NET GOAL	MEMBER GROWTH ACTUAL	DROPPED MEMBERS ACTUAL (including transfers)
JULY/AUG/SEPT	60	27	28
OCT/NOV/DEC	30	25	46
JAN/FEB/MAR	45	0	0
APR/MAY/JUNE	65	0	0

GOALS AND ACTUAL NEW CLUBS CUMULATIVE



GOALS AND ACTUAL MEMBERS CUMULATIVE



DROPPED CLUBS: 1	25 CLUBS OF 74 ADDED 1 OR MORE NEW MEMBERS	GENDER DISTRIBUTION MALE 1,087 (70.68%) FEMALE 450 (29.26%)
DROPPED MEMBERS DECEASED 11 CLUB CANCELLED 0 OTHER 63 TOTAL 74	CLICK HERE FOR CUMULATIVE MEMBERSHIP DATA	TOTAL FAMILY UNIT MEMBERS 268 FAMILY MEMBERS PAYING HALF DUES 136